



ENCLOSURES & ASSEMBLY SERVICES

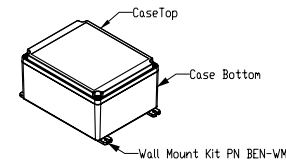
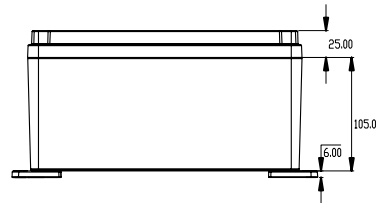
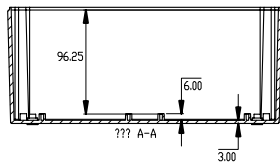
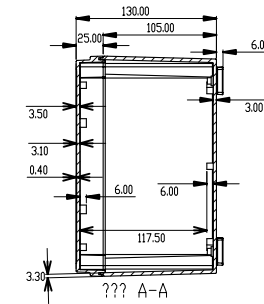
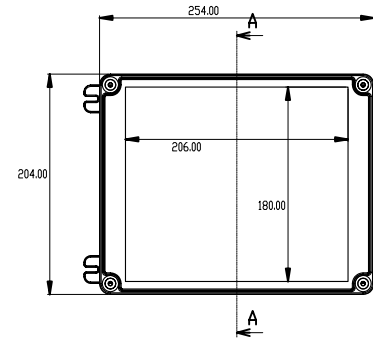
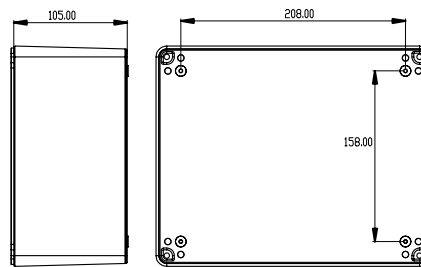
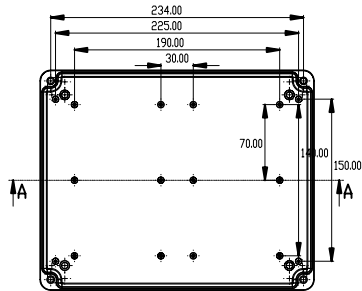
BOX ENCLOSURES, INC

28835 N. HERKY DRIVE, #114,
LAKE BLUFF, IL 60044

TEL: 847-932-4700

WWW.BOXENCLOSURES.COM

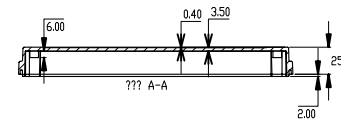
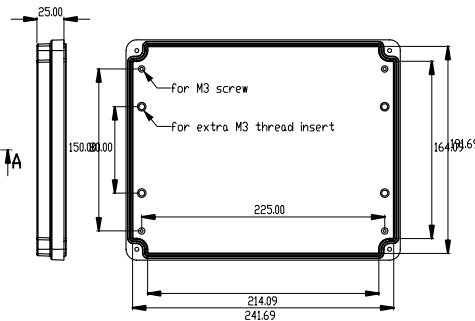
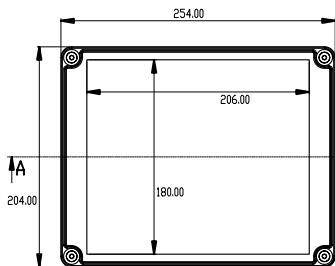
FAX: 847-932-4701



BEN-92 - Dimension Drawing
Material: ABS UL 94HB (RoHs).
Size: 250x200x130mm.
Color: Light Gray.

- Included:
1. Assembly Screws x4.
 2. Gasket x1.
 3. PCB screws x8.

- Optional:
4. Wall Mount Kit PN BEN-WM2



BEN-92 -TOP Cover
Material: ABS UL 94HB (RoHs).
Size: 250x200x25mm.
Color: Light Gray.

<p>ENCLOSURES & ASSEMBLY SERVICES</p>		Revision:	
		Model:	
Title: BEN-92		Dwg. No.:	Part No.:
Material:	<p>TOLERANCE all dimension in mm unless otherwise specified.</p> <p>x ±0.20 .x ±0.10 .xx ±0.05 ANGLE ±0.5°</p>	Color:	Drn. Date
Finish:		Qty:	Chk. Date
Proj.		A4 Sheet 1 of 1	App. Date

THIS DRAWING IS THE PROPERTY OF AND MAY EMBODY PROPRIETARY INFORMATION OWNED BY Box Enclosures . IT IS PROVIDED UNDER A CONFIDENTIAL RELATIONSHIP FOR A SPECIFIC PURPOSE. THE RECIPIENT AGREES TO USE IT ONLY FOR SUCH PURPOSE AND RETURN IT TO Box Enclosure UPON REQUEST.